

# Elevated red blood cell distribution width predicts mortality in acute exacerbation of COPD

*Valoarea crescută a lărgimii distribuției eritrocitare prezice mortalitatea în exacerbările acute ale BPOC*

## Abstract

**Objective:** Red blood cell distribution width (RDW) has been shown to predict clinical outcomes in many diseases. To our knowledge, the prognostic significance of RDW in acute exacerbation of chronic obstructive pulmonary disease (AECOPD) has not been reported so far. The aim of the present study is to investigate the relation of RDW to in-hospital mortality in patients with AECOPD.

**Methods:** We retrospectively reviewed hospital records of inpatients with AECOPD in two referral teaching hospitals in two provinces of east Azerbaijan and west Azerbaijan, Iran. Associations between RDW and in-hospital death were analyzed with using correlation, logistic regression analysis, and receiver operating characteristic (ROC) curves in SPSS software.

**Results:** We studied 330 patients, of whom 75 (22.7%) did not survive to hospital discharge. In univariate analysis higher RDW-SD values were associated with increased hospital mortality (30.2% vs. 15.8%  $p=0.002$  odds ratio 2.31). Using the first quartile of RDW as reference, odds ratio (OR) mortality among patients in the highest RDW quartile was 5.34 (95% CI, 2.70-12.57;  $p=0.001$ ). In multivariate analysis RDW-SD remained an independent risk factor for mortality after correction for age, thrombocytopenia, leukocyte count, mean corpuscular volume, anemia. In receiver-operating curve analysis the AUC for RDW was 0.663, which was more than that of hemoglobin, platelets.

**Conclusion:** RDW on admission day proves to be a useful indicator to predict in-hospital death in AECOPD.

**Keywords:** Red blood cell distribution width, COPD, AECOPD, in-hospital death, outcome

## Rezumat

**Obiective:** A fost demonstrat faptul că lărgimea distribuției eritrocitare (RDW) prezice evoluția clinică în multe afecțiuni. După cunoștințele noastre, prognosticul și semnificația RDW în exacerbările acute de BPOC nu au fost clarificate și raportate până în acest moment. Scopul studiului de față este investigarea relației dintre RDW și mortalitatea intraspitalicească în cazul pacienților cu exacerbări acute ale BPOC.

**Metode:** Au fost analizate retrospectiv documentele medicale ale pacienților internați cu exacerbări de BPOC în două spitale universitare de referință din două provincii din Azerbaijan-ul de vest și de est, Iran. Asocierile dintre RDW și mortalitatea intraspitalicească au fost analizate utilizând corelația, analiza de regresie logistică și curbele ROC în programul SPSS.

**Rezultate:** Au fost analizate documentele a 330 pacienți, din care 75 (22.7%) au decedat în spital. În analiza univariată valorile mari ale distribuției eritrocitare (RDW-SD) au fost asociate cu o mortalitate intraspitalicească crescută (30.2% vs. 15.8%  $p=0.002$  odds ratio 2.31). Prin utilizarea primei quartile a RDW ca referință, odds ratio (OR) al mortalității în rândul pacienților cu cea mai înaltă quartilă a RDW a fost de 5.34 (95% CI, 2.70-12.57;  $p=0.001$ ). În analiza multivariată RDW-SD a rămas un factor de risc independent pentru mortalitate după corecția pentru vârstă, trombocitopenie, numărul de leucocite, volumul corpuscular mediu, anemie. În analiza curbelor ROC AUC pentru RDW a fost 0.663, mai mare decât cea pentru hemoglobină, trombocite.

**Concluzii:** RDW la internare este un predictor util al mortalității intraspitalicești în cazul exacerbărilor BPOC.

**Cuvinte-cheie:** lărgimea distribuției eritrocitare, BPOC, exacerbări BPOC, mortalitate intraspitalicească, rezultat

Shaghayegh Rahimirad<sup>1</sup>, MohammaReza Ghafari<sup>2</sup>, Khalil Ansarin<sup>3</sup>, Farid Rashidi<sup>4</sup>, Mohammad Hossein Rahimi-Rad<sup>5</sup>

1. Student of Medicine, faculty of Medicine, Tabriz University of medical sciences, Tabriz, Iran

2. Associate professor of medicine, Tuberculosis & Lung research center, Tabriz University of medical sciences, Tabriz, Iran

3. Professor of Medicine, Tuberculosis & Lung research center, Tabriz University of medical sciences, Tabriz, Iran

4. Assistant professor of medicine Tuberculosis & Lung research center, Tabriz University of medical sciences, Tabriz, Iran

5. Professor of medicine Tuberculosis & Lung research center, Tabriz University of medical sciences, Tabriz, Iran & department of medicine, Urmia University of medical sciences, Urmia, Iran

Corresponding author: Mohammad Hossein Rahimi-Rad, bronchoscopy unite, Imam-Khomeini Hospital, Ershad avenue, Urmia, Iran  
E-mail: rahimirad@hotmail.com

## Introduction

Chronic obstructive pulmonary disease (COPD) ranked as the third most common cause of death worldwide after ischemic heart disease and stroke in 2010<sup>(1)</sup>. Clinically, acute exacerbations of COPD (AECOPD) are the most important events in the history of this disease, and its in-hospital mortality is reported at 2.5%<sup>(2)</sup>, 7.25%<sup>(3)</sup>, 7.4%<sup>(4)</sup>, and 10%<sup>(5)</sup>. The identification of predictive markers for outcome in AECOPD patients following hospitalization may help the physicians in making better decisions and management. Many biomarkers are used for prediction of outcome, but some are expensive or are not available in many hospitals.

Red blood cell distribution width (RDW) in complete blood count (CBC) shows variations in size of circulating red blood cells (anisocytosis). RDW is used for the differential diagnosis of anemia.

RDW has also been shown as a possible marker for all-cause mortality<sup>(6,7)</sup>. In the Third National Health and Nutrition Examination Survey of 15 852 adults, mortality rates increased 5-fold from the lowest to the highest quintile of RDW<sup>(8)</sup>.

Prior studies have investigated the association of RDW with mortality in internal medicine ward<sup>(9)</sup>, critical care unites (adult and pediatric)<sup>(10-13)</sup>, and emergency department<sup>(14)</sup>.

**Table 1** Relation of categorical variable to in-hospital death

	Death in hospital N (%)	Discharged alive N (%)	Total N (%)	P value	Odds ratio (95% CI)
<b>Male</b>	49 (65.3)	133 (52.2)	182 (55.2)	0.044	NS
<b>Female</b>	26 (34.7)	122 (47.8)	148 (44.8)		
<b>Comorbidity*</b>				0.42	NS
NO	31 (9.5)	91 (27.7)	122 (37.2)		
Yes	162 (64.0)	44 (51.7)	206 (62.8)		
Diabetes mellitus	12(20)	48(80)	60(18.2)	0.311	
Hypertension	36(21.45)	132(78.6)	168(50.9)	0.329	
CHF and coronary disease	16(23.9)	51(76.1)	67(20.3)	0.64	
<b>Anemia</b>				0.000	2.82 (1.66-4.80)
Yes	38 (35.8)	68 (64.2)	106 (32.1)		
No	37 (16.5)	187 (83.5)	224 (67.9)		
RDW-SD>46	48 (30.2)	111 (69.8)	159 (48.2)	0.002	2.31 (1.35-3.93)
RDW-SD<46	27 (15.8)	144 (84.2)	171 (51.8)		
Thrombocytopenia	41 (32.8)	84 (67.2)	125(37.9)	0.001	2.45(1.45-4.14)
Non-thrombocytopenia	34 (16.6)	171 (83.4)	205(62.1)		
<b>RDW quartiles</b>				0.001	Ref=1 2.60(1.05-6.30) 2.75(1.130-6.70) 5.34(2.70-12.57)
1 <sup>st</sup> quartile	8 (9.8)	74 (90.2)	82 (24.8)		
2 <sup>nd</sup> quartile	18 (21.7)	65 (78.3)	83 (25.2)		
3 <sup>rd</sup> quartile	19 (22.9)	64 (77.1)	83 (25.2)		
4 <sup>th</sup> quartile	30 (36.6)	52 (63.4)	82 (24.8)		

\*Presence of any one or more of hypertension, diabetes mellitus, congestive heart failure, stable ischemic heart disease; RDW: red cell distribution width

**Table 2** Relation of continues variables to in-hospital death

	Death in hospital	Discharged alive	Total	P value
Age mean± SD	73.39± 10.07	68.55± 10.73	69.65±10.76	0.001
Median	73	68	70	
Hb Mean± SD (l)	12.55±3.18	13.92± 2.53	13.66± 2.75	0.000
Median	12.5	13.5	13.4	
MCV Mean± SD	88.04± 8.61	90.55± 9.22	89.98± 9.14	0.037
Median	88	91.30	90.75	
RDW-SD Mean± SD	46.96± 18.39	36.35± 20.17	38.76±20.25	0.000
Median	51.100	41.6	45.45	
RDW-CV Mean± SD	18.28± 6.42	16.12± 3.74	16.72± 4.75	0.002
Median	16.4	14.85	13.5	
Platelet count mean	150293±85743	186447±90872	178,205± 90878	0.002
Median	143000	182000	175,000	
WBC	11194± 5876	8827± 3612	9365± 4339	0.000
	11300	8300	8600	

Hb: haemoglobin in mg/dl; RDW-SD: Red cell distribution width-standard deviation in femtoliter; WBC: white blood cells count/ml

Many studies have described RDW as a prognostic marker in several cardiovascular disease including congestive heart failure<sup>(15)</sup>, coronary artery disease<sup>(16)</sup>, carotid atherosclerosis<sup>(17)</sup>, peripheral artery disease<sup>(18)</sup>, and cerebrovascular accidents<sup>(19)</sup>.

RDW has also been described to be predictive of mortality in hip fracture<sup>(20,21)</sup> pancreatitis<sup>(22)</sup>, acute kidney injury<sup>(23)</sup>, haemodialysis<sup>(24)</sup>, necrotizing fasciitis<sup>(25)</sup>, infective endocarditis<sup>(26)</sup>, sepsis<sup>(27)</sup> and even organophosphate poisoning<sup>(28)</sup>. In respiratory medicine area, the relation of higher RDW with mortality have been shown for lung can-

cer<sup>(29,30)</sup>, pulmonary hypertension<sup>(31)</sup>, pulmonary embolism<sup>(32,33)</sup>, acute dyspnea<sup>(34)</sup>, community acquired pneumonia<sup>(35)</sup> and stable COPD patients<sup>(36)</sup> but not AECOPD.

To the best of our knowledge, there is only one published article, by Seyhan et al.<sup>(36)</sup>, that has investigated and shown that elevated RDW levels have been associated with increased mortality risk in stable COPD patients.

As relation between RDW and in-hospital mortality in AECOPD has not been reported in the literature so far, the aim of this study is to find whether there is any relationship.

**Table 3** Multivariate binary logistic regression analysis

	<b>B</b>	<b>Wald</b>	<b>P value</b>	<b>Exp (B)</b>
<b>Gender(male)</b>	0.532	2.839	0.092	1.702
<b>Age</b>	0.046	9.294	0.002	1.047
<b>anemia</b>	-0.923	8.583	0.003	0.397
<b>MCV</b>	-0.027	2.581	0.108	0.973
<b>Platelet</b>	0.000	10.341	0.001	1.000
<b>RDW-SD</b>	0.025	9.515	0.002	1.025
<b>WBC</b>	0.000	18.740	0.000	1.000
<b>Constant</b>	-3.383	3.084	0.079	0.034

## Methods and material

This is a retrospective cohort study at two referral teaching hospitals in two provinces in Iran, Imam-Reza hospital in Tabriz, and Imam-Khomeini hospital in Urmia. We reviewed hospital charts of 330 hospitalized patients with primary and final diagnosis of AECOPD. Patients whose primary or final diagnosis was not AECOPD were excluded. Patients with haematologic and oncologic disease were excluded. The admission day CBC parameters, age, sex, were recorded. Outcomes of discharged alive or death in-hospital were recorded.

## Definition of terms

RDW-SD in femtoliter (fL) is an actual measurement of the width of the RBC size-distribution histogram. This parameter is therefore not influenced by the average RBC size (mean corpuscular volume, MCV).

RDW-CV (expressed in %) is calculated from standard deviation and MCV.

RDW-CV (%) = 1 standard deviation of RBC volume/MCV × 100%

Of note, since RDW-CV is mathematically derived from MCV, it is therefore affected by the average RBC size (MCV).

In this study MCV has significant relation to mortality, to prevent the confounding effect of MCV on RDW, we emphasized most on RDW-SD.

## Analysis

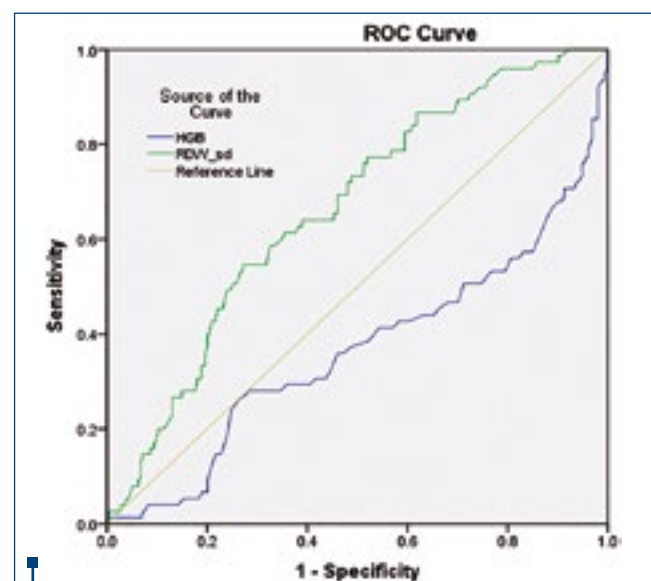
Statistical analyses were performed using SPSS 23.0 software.  $P < 0.05$  was considered statistically significant. Categorical data were analyzed using chi-square tests and expressed as frequency percentage and odds ratios. Quantitative data are expressed as mean and standard deviation (SD) and median. To compare groups, independent t-test is used in data with normal distribution and Mann-Whitney U-test is used in data without a normal distribution. Those parameters with  $p$  value  $< 0.05$  in univariate analysis were entered into binary logistic regression analysis with the "Enter" method. We used a receiver-operating characteristic (ROC) curve to assess the discriminating performance of RDW to predict death in AECOPD, and the cut-off values for RDW with sensitivity and specificity were calculated.

## Results

We studied 330 patients with AECOPD. Based on patient deaths within hospital, patients were classified as death

groups (75 patients 22.7%) and survivor groups (255 patients 77.3%). Of all patients, 48.2% had higher than normal RDW-SD. Tables 1 and 2 show a comparison of the two groups. As shown in the tables, anemia, RDW, MCV, age, WBC, platelet, and sex were statistically significant ( $p$  value  $< 0.05$ ). In the death group, the mean value of RDW-SD value was significantly higher than in discharged patients ( $46.96 \pm 18.39$  fL vs.  $36.35 \pm 20.17$  fL,  $P < 0.01$ ). Using the first quartile of RDW as reference, odds ratio (OR) mortality among patients in the highest RDW quartile was 5.34 (2.70-12.57) (95% CI, 2.70-12.57;  $p = 0.001$ ). In a binary-logistic-regression analysis, the higher RDW-SD group remained strong as a significant predictor of in-hospital mortality even after adjustment for age, gender, haemoglobin, and WBC count (Table 3).

Receiver-operating-characteristic curve analysis was used to evaluate the values for RDW-SD to predict mortality in AECOPD patients (Figure 1). RDW-SD had an area under the curve value (AUC) of 0.663 (95% CI, 0.597–0.729). Cut-off value of 46 (upper limit normal for RDW-SD) showed sensitivity of 64% and specificity of 58% for predicting in-hospital death. AUC for haemoglobin (0.365) was less than RDW (0.663). In bivariate correlation analysis RDW-SD values were negatively correlated with haemoglobin ( $r = -1.42$ ,  $P = 0.01$ ) but not with age ( $r = 0.003$ ,  $p = 0.964$ ) and WBC count ( $r = -0.005$ ,  $p = 0.96$ ).



**Figure 1.** Receiver operative curve analysis for RDW-SD and hemoglobin

## Discussion

The major finding of the present study was RDW was higher in patients with in-hospital death. To the best of our knowledge, this is the first report on the prognostic significance of RDW in AECOPD.

Koma et al.<sup>(30)</sup> carried out a retrospective study of 332 patients with lung cancer reported that the survival rates were lower in the high RDW group than in the low RDW group. Multivariate analysis showed higher RDW is a significant prognostic factor.

In a prospective study of 136 patients with acute pulmonary thromboembolism, high RDW was independently associated with increased acute pulmonary embolism related mortality (Hazard ratio 15.5)<sup>(33)</sup>.

In patients with pulmonary hypertension, RDW was superior to N-terminal-pro-B-type natriuretic peptide (NT-pro-BNP) in predicting outcome<sup>(31)</sup>.

In a cohort study in which RDW was measured in 1,840 patients with various forms of newly diagnosed or progressive cancer after remission, high RDW value was found to be a significant predictor of mortality<sup>(37)</sup>.

Vashistha et al.<sup>(24)</sup> with studying of 109,675 adult on haemodialysis reported higher mortality in patients with elevated RDW, and RDW was stronger predictor of death than anemia.

In Zhang et al.<sup>(38)</sup> study of 122 patients with traumatic brain injury, high RDW had a positive predictive value (PPV), negative predictive value (NPV) 65.4%, 95.7%.

Shteinshnaider et al.<sup>(9)</sup> reported that among 586 internal medicine inpatients, the mortality rates were 51.1% in elevated RDW vs. 20.3% ( $p < 0.001$ ) in patients with normal RDW. Every 1% increment of RDW on admission was associated with relative risk of 1.21 for predicting mortality.

In a retrospective analysis of 907 patients with acute dyspnea who visited an emergency department, there was a stepwise increase of 30-day mortality risk from lowest to highest RDW tertiles<sup>(34)</sup>.

The precise mechanism for the association between high RDW and mortality in these diverse conditions remains unclear, however, it is assumed to be related to chronic inflammation, which interferes with erythropoiesis and causes anisocytosis<sup>(39)</sup>. Studies showed that RDW positively correlated with inflammatory indices such as C-reactive protein (CRP), erythrocyte sedimentation rate (ESR), and inflammatory cytokines in a large cohort of unselected outpatients<sup>(40)</sup>, systemic lupus erythematosus patients<sup>(41)</sup>, rheumatoid arthritis<sup>(42)</sup>, and obese adolescents<sup>(43)</sup>.

It is proposed that RBCs as biomarker of progression in chronic or acute diseases with oxidative alterations<sup>(44)</sup>. It is well recognised that COPD is associated with oxidative stress imbalance.

RDW increases in the anemia of chronic diseases, independent of iron status. It is explained that inflammation processes promote deaths of RBCs and alter erythropoiesis and RBCs membrane deformability<sup>(45)</sup>. Some inflammatory mediators influence iron metabolism and suppress erythropoietin-induced maturation of RBCs. COPD is considered an inflammatory disease. Therefore, it can be assumed

RDW values reflect the inflammation status of AECOPD. Another possible explanation for relation of elevated RDW is that malnutrition is one of comorbidities in COPD, which is directly caused by COPD<sup>(46)</sup>. Nutritional deficiencies result in impaired formation of erythrocytes, which leads to a heterogeneous RBC population and an increase in RDW.

The third explanation for the association of high RDW may be right ventricular failure. In patients with COPD, the levels of RDW predicted the presence of right ventricular failure with a sensitivity of 70% and specificity of 93.1%<sup>(47)</sup>.

Age was an independent predictor of in-hospital mortality in multivariate logistic analysis. Most other studies have similar results<sup>(4,48)</sup>. RDW retains its significance in multivariate analysis. RDW is a strong and consistent predictor of total and cause-specific mortality in older adults in community-based<sup>(8)</sup> samples and hospital<sup>(49)</sup> studies.

In our study, thrombocytopenia, leukocytosis, and anemia retain their significant value in logistic regression analysis. Their significant role in AECOPD had been shown in other studies<sup>(50,51)</sup>.

RDW as a prognostic factor for patients with AECOPD has two advantages. First, it is an inexpensive index without extra-cost, because CBC is a routine test for patients with AECOPD. It is easily available and can be tested even in a community hospital. Second, the lifespan of red blood cells is approximately 120 days. Therefore, RDW may have less biological variation than ESR, CRP, WBC platelets, and may reflect the long duration of the patient's condition.

Seyhan et al.<sup>(36)</sup>, with a study of 270 stable COPD patients, reported that elevated RDW levels were associated with increased mortality risk. Taken together these two studies, we conclude RDW may be a potent marker of mortality not only in stable COPD but also in AECOPD.

The major limitation of this study is its retrospective design. The other weakness of our study is that we did not use the Charlson comorbidity index<sup>(52)</sup> for evaluation of comorbid conditions. Finally, we didn't measure well recognised inflammatory markers. However, we think that this retrospective cohort has adequate effect size to suggest a reasonable strength of evidence for prognostic relation of RDW with mortality. Future studies are suggested with prospective design with measurement of inflammatory markers, such as Procalcitonin, IL-6, and CRP with evaluation of comorbidities with Charlson index.

## Conclusion:

We demonstrated elevated RDW predicts an increased risk of in-hospital death in AECOPD. Because testing for RDW values in AECOPD patients is an affordable method that will not require any additional costs either for patient or hospital, the potential prognostic value of RDW should be integrated into the comprehensive management of patients with ACOPD. Further studies are required to elucidate its underlying mechanism. ■

**Acknowledgment:** This article is written from Ms. Shaghayegh RahimiRad thesis for graduation in general medicine. It was approved by Tabriz University of Medical Sciences Lung and Tuberculosis research Center

## References

- Lozano R, Naghavi M, Foreman K, et al. Global and regional mortality from 235 causes of death for 20 age groups in 1990 and 2010: a systematic analysis for the Global Burden of Disease Study 2010. *Lancet* 2012;380:2095-128.
- Patil SP, Krishnan JA, Lechtzin N, Diette GB. In-hospital mortality following acute exacerbations of chronic obstructive pulmonary disease. *Arch Intern Med* 2003;163:1180-6.
- Fruchter O, Yigla M. Predictors of long-term survival in elderly patients hospitalized for acute exacerbations of chronic obstructive pulmonary disease. *Respirology* 2008;13:851-5.
- Roche N, Zureik M, Soussan D, Neukirch F, Perrotin D. Predictors of outcomes in COPD exacerbation cases presenting to the emergency department. *Eur Respir J* 2008;32:953-61.
- Gaude GS, Rajesh BP, Chaudhury A, Hattiholi J. Outcomes associated with acute exacerbations of chronic obstructive pulmonary disorder requiring hospitalization. *Lung India* 2015;32:465-72.
- Cavusoglu E, Chopra V, Gupta A, et al. Relation between red blood cell distribution width (RDW) and all-cause mortality at two years in an unselected population referred for coronary angiography. *International journal of cardiology* 2010;141:141-6.
- Patel KV, Ferrucci L, Ershler WB, Longo DL, Guralnik JM. Red blood cell distribution width and the risk of death in middle-aged and older adults. *Archives of internal medicine* 2009;169:515-23.
- Perlstein TS, Weuve J, Pfeffer MA, Beckman JA. Red blood cell distribution width and mortality risk in a community-based prospective cohort. *Archives of internal medicine* 2009;169:588-94.
- Shteinshnaider M, Barchel D, Almozino-Sarafian D, et al. Prognostic significance of changes in red cell distribution width in an internal medicine ward. *European journal of internal medicine* 2015;26:616-22.
- Hunziker S, Celi LA, Lee J, Howell MD. Red cell distribution width improves the simplified acute physiology score for risk prediction in unselected critically ill patients. *Critical care* 2012;16:R89.
- Meynaar IA, Knook AH, Coolen S, et al. Red cell distribution width as predictor for mortality in critically ill patients. *The Netherlands journal of medicine* 2013;71:488-93.
- Ramby AL, Goodman DM, Wald EL, Weiss SL. Red Blood Cell Distribution Width as a Pragmatic Marker for Outcome in Pediatric Critical Illness. *PLoS one* 2015;10:e0129258.
- Zhang Z, Xu X, Ni H, Deng H. Red cell distribution width is associated with hospital mortality in unselected critically ill patients. *Journal of thoracic disease* 2013;5:730-6.
- Lippi G, Dipalo M, Teti L, Cervellini G. Relationship between red blood cell distribution width and prognostic biomarkers in patients admitted to the emergency department with acute infections. *European journal of internal medicine* 2013;24:e15-6.
- Dai Y, Konishi H, Takagi A, Miyauchi K, Daida H. Red cell distribution width predicts short- and long-term outcomes of acute congestive heart failure more effectively than hemoglobin. *Experimental and therapeutic medicine* 2014;8:600-6.
- Khaki S, Mortazavi SH, Bozorgi A, Sadeghian S, Khoshnevis M, Mahmoodian M. Relationship Between Red Blood Cell Distribution Width and Mortality of Patients with Acute Myocardial Infarction Referring to Tehran Heart Center. *Critical pathways in cardiology* 2015;14:112-5.
- Wonnerth A, Krychtiuk KA, Mayer FJ, et al. Red cell distribution width and mortality in carotid atherosclerosis. *European journal of clinical investigation* 2016;46:198-204.
- Ye Z, Smith C, Kullo IJ. Usefulness of red cell distribution width to predict mortality in patients with peripheral artery disease. *The American journal of cardiology* 2011;107:1241-5.
- Ani C, Ovbiagele B. Elevated red blood cell distribution width predicts mortality in persons with known stroke. *Journal of the neurological sciences* 2009;277:103-8.
- Garbharran U, Chinthapalli S, Hopper I, George M, Back DL, Dockery F. Red cell distribution width is an independent predictor of mortality in hip fracture. *Age and ageing* 2013;42:258-61.
- Lv H, Zhang L, Long A, et al. Red Cell Distribution Width as an Independent Predictor of Long-Term Mortality in Hip Fracture Patients: A Prospective Cohort Study. *Journal of bone and mineral research : the official journal of the American Society for Bone and Mineral Research* 2016;31:223-33.
- Wang D, Yang J, Zhang J, et al. Red cell distribution width predicts deaths in patients with acute pancreatitis. *Journal of research in medical sciences : the official journal of Isfahan University of Medical Sciences* 2015;20:424-8.
- Oh HJ, Park JT, Kim JK, et al. Red blood cell distribution width is an independent predictor of mortality in acute kidney injury patients treated with continuous renal replacement therapy. *Nephrology, dialysis, transplantation : official publication of the European Dialysis and Transplant Association - European Renal Association* 2012;27:589-94.
- Vashistha T, Streja E, Molnar MZ, et al. Red Cell Distribution Width and Mortality in Hemodialysis Patients. *American journal of kidney diseases : the official journal of the National Kidney Foundation* 2016.
- Weng CL, Wang CH, Chen IC, et al. Red cell distribution width is an independent predictor of mortality in necrotizing fasciitis. *The American journal of emergency medicine* 2014;32:1259-62.
- Guray Y, Ipek EG, Guray U, et al. Red cell distribution width predicts mortality in infective endocarditis. *Archives of cardiovascular diseases* 2014;107:299-307.
- Lorente L, Martin MM, Abreu-Gonzalez P, et al. Red blood cell distribution width during the first week is associated with severity and mortality in septic patients. *PLoS one* 2014;9:e105436.
- Kang C, Park IS, Kim DH, et al. Red cell distribution width as a predictor of mortality in organophosphate insecticide poisoning. *The American journal of emergency medicine* 2014;32:743-6.
- Warwick R, Mediratta N, Shackcloth M, Shaw M, McShane J, Poullis M. Preoperative red cell distribution width in patients undergoing pulmonary resections for non-small-cell lung cancer. *European journal of cardiothoracic surgery : official journal of the European Association for Cardiothoracic Surgery* 2014;45:108-13.
- Koma Y, Onishi A, Matsuoka H, et al. Increased red blood cell distribution width associates with cancer stage and prognosis in patients with lung cancer. *PLoS one* 2013;8:e80240.
- Hampole CV, Mehrotra AK, Thenappan T, Gomberg-Maitland M, Shah SJ. Usefulness of red cell distribution width as a prognostic marker in pulmonary hypertension. *The American journal of cardiology* 2009;104:868-72.
- Abul Y, Ozsü S, Korkmaz A, Bulbul Y, Orem A, Ozlu T. Red cell distribution width: a new predictor for chronic thromboembolic pulmonary hypertension after pulmonary embolism. *Chronic respiratory disease* 2014;11:73-81.
- Zorlu A, Bektaşoglu G, Guven FM, et al. Usefulness of admission red cell distribution width as a predictor of early mortality in patients with acute pulmonary embolism. *The American journal of cardiology* 2012;109:128-34.
- Hong N, Oh J, Kang SM, et al. Red blood cell distribution width predicts early mortality in patients with acute dyspnea. *Clinica chimica acta; international journal of clinical chemistry* 2012;413:992-7.
- Braun E, Kheir J, Mashiach T, Naffaa M, Azam ZS. Is elevated red cell distribution width a prognostic predictor in adult patients with community acquired pneumonia? *BMC infectious diseases* 2014;14:129.
- Seyhan EC, Ozgul MA, Tutar N, Omur I, Uysal A, Altin S. Red blood cell distribution and survival in patients with chronic obstructive pulmonary disease. *Copd* 2013;10:416-24.
- Riedl J, Posch F, Königsbrugge O, et al. Red cell distribution width and other red blood cell parameters in patients with cancer: association with risk of venous thromboembolism and mortality. *PLoS one* 2014;9:e111440.
- Zhang B, Zhao J. Red blood cell distribution width as a prognostic biomarker for mortality in traumatic brain injury. *International journal of clinical and experimental medicine* 2015;8:19172-5.
- Pierce CN, Larson DF. Inflammatory cytokine inhibition of erythropoiesis in patients implanted with a mechanical circulatory assist device. *Perfusion* 2005;20:83-90.
- Lippi G, Targher G, Montagnana M, Salvagno GL, Zoppini G, Guidi GC. Relation between red blood cell distribution width and inflammatory biomarkers in a large cohort of unselected outpatients. *Archives of pathology & laboratory medicine* 2009;133:628-32.
- Hu ZD, Chen Y, Zhang L, et al. Red blood cell distribution width is a potential index to assess the disease activity of systemic lupus erythematosus. *Clinica chimica acta; international journal of clinical chemistry* 2013;425:202-5.
- Lee WS, Kim TY. Relation between red blood cell distribution width and inflammatory biomarkers in rheumatoid arthritis. *Archives of pathology & laboratory medicine* 2010;134:505-6.
- Fujita B, Strodthoff D, Fritzenwanger M, et al. Altered red blood cell distribution width in overweight adolescents and its association with markers of inflammation. *Pediatric obesity* 2013;8:385-91.
- Minetti M, Agati L, Malorni W. The microenvironment can shift erythrocytes from a friendly to a harmful behavior: pathogenetic implications for vascular diseases. *Cardiovascular research* 2007;75:21-8.
- Weiss G, Goodnough LT. Anemia of chronic disease. *N Engl J Med* 2005;352:1011-23.
- Cavaillès A, Brinchault-Rabin G, Dixmier A, et al. Comorbidities of COPD. *European Respiratory Review* 2013;22:454-75.
- Sincer I, Zorlu A, Yilmaz MB, et al. Relationship between red cell distribution width and right ventricular dysfunction in patients with chronic obstructive pulmonary disease. *Heart & lung : the journal of critical care* 2012;41:238-43.
- Steer J, Gibson GJ, Bourke SC. Predicting outcomes following hospitalization for acute exacerbations of COPD. *QJM* 2010;103:817-29.
- Martinez-Velilla N, Ibanez B, Cambra K, Alonso-Renedo J. Red blood cell distribution width, multimorbidity, and the risk of death in hospitalized older patients. *Age (Dordrecht, Netherlands)* 2012;34:717-23.
- Rahimi-Rad MH, Soltani S, Rabieepour M, Rahimirad S. Thrombocytopenia as a marker of outcome in patients with acute exacerbation of chronic obstructive pulmonary disease. *Pneumonol Alergol Pol* 2015;83:348-51.
- Rahimi-Rad MH, Sadighi T, Rabieepour M, Dinparast R, RahimiRad S. Prevalence of anemia and its impact on mortality in patients with acute exacerbation of chronic obstructive pulmonary disease in a developing country setting. *Pneumologia (Bucharest, Romania)* 2015;64:27-30.
- Charlson ME, Pompei P, Ales KL, MacKenzie CR. A new method of classifying prognostic comorbidity in longitudinal studies: development and validation. *Journal of chronic diseases* 1987;40:373-83.